



## COMPANY PROFILE

# WHO WE ARE



## SPECIALISTS IN AC AND DC SWITCHES

With over 50 years of experience we are specialist in the manufacturing of cam switches, disconnect switches, position and safety switches, power tools switches and relay sockets.

We design and build extremely reliable and efficient products: our company is managed in full accordance with UNI EN ISO 9001, ISO 14001 and all our products are verified in our laboratory under the most stringent standards to guarantee performance, durability and safety.



## HEADQUARTER & PRODUCTION PLANTS



**HEADQUARTER**  
CAMBIAGO (MILAN) - ITALY



**METAL PUNCHING PLANT**  
VERONA - ITALY



**PRODUCTION PLANT**  
BALASSAGYARMAT - HUNGARY



# WHERE WE ARE

# OUR HYSTORY

**1964**

Foundation of Bremas. First plant in Bresso (Milan).

**1971**

Distribution agreement in USA, Middle East and South America.

**1981**

Introduction of Cam switches CA series up to 630 A.

**1978**

Enlargement of production with plastic moulding and assembly, with new plant in Trezzano (Milan).

**1985**

Compact disconnect AC switches up to 100 A.

**1997**

Acquisition of Ersce, Italian leader of limit and safety switches. New plant in Liscate with automatic assembling lines.

**2010**

Acquisition of Tecnofina, an Italian company specialized in metal punching production.

**2012**

Patent for new DC disconnect switches series.

**2013**

New Headquarters in Cambiago (Milan).

**2014**

DP series, compact DC disconnect switches rated 1000 Vdc 12 A.

**2015**

DK series, rated 1000 Vdc 16 A.

**2016**

DM series rated 1000 Vdc 20 A and 2 patent protecting our DC products.

**2017**

DX series, rated 1000 Vdc 50 A, and 1500 Vdc 20 A. New automatic assembly and testing line for DC disconnect switches.

**2018**

New plant in Hungary.

**2019**

Expansion of our laboratory and equipment to perform internally tests up to 1500 Vdc.

**2021**

One new patent deposited related to a new switching mechanism.

**2022**

Launch of new DC disconnect switch D...E series (IEC), with new ratings up to 1000 Vdc 60 A, and 1500 Vdc 30 A. A new patent deposited, related to the new DU series.

**2023**

Launch of new DC disconnect switch DU series (UL508i).

# OUR CATALOGS

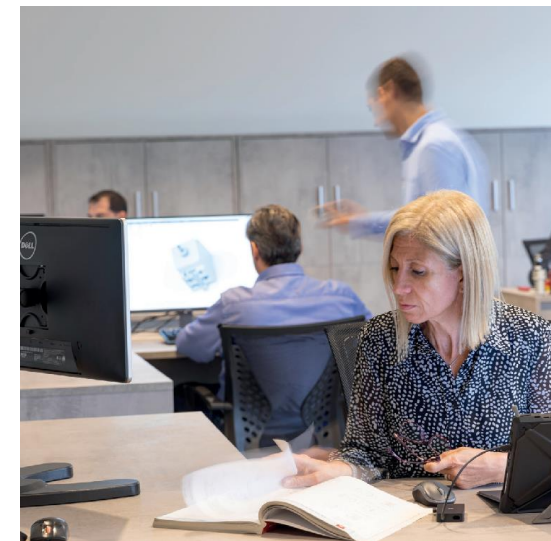
MORE THAN **50 YEARS**  
OF PROUD HISTORY.



**OUR HISTORY,**  
THE GREATEST  
PROOF OF **OUR**  
**RELIABILITY!**

# R&D

# DEPARTMENT



Bremas Ersce Research and Development department is committed to new products design and to update existing products to meet customer needs.



# TESTING

WE CONTINUOUSLY INVEST  
IN OUR TEST **LABORATORY** TO  
ENSURE THE BEST **TECHNOLOGICAL**  
**DEVELOPMENT** OF OUR PRODUCTS.

## TESTING LABORATORY



# CUSTOMIZATION



## CUSTOMIZED SPECIALISTS

Bremas Ersce has a 50 years experience in creating customized switches, with different options to satisfy the most different requests.

- Customized solutions represent more than 70% of our sales.
- Team of skilled technicians for the study of custom solutions.
- Rapid development and sampling.
- Shorter delivery times and at the top of the market.

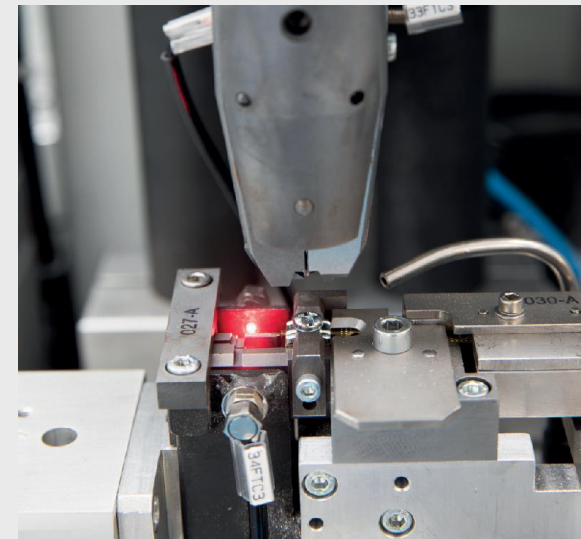




# PRODUCTION



**EFFICIENCY**  
OF PRODUCTION  
AND **HIGH QUALITY**



# PRODUCTION

## METAL PUNCHING PARTS

100% products and components are MADE IN ITALY.  
High precision metal punching plant and plastic  
molding for greater reliability over time.



## INJECTION MOULDING

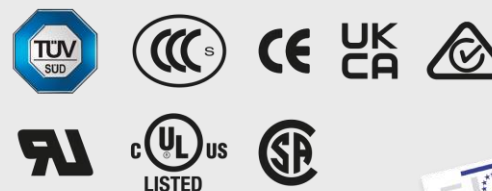
# QUALITY



## CERTIFIED QUALITY PRODUCTS

A certified quality to confirm the constant commitment of Brema Erce to continuously improve customer's satisfaction.

- Products and components are MADE IN ITALY.
- 100% Quality control on products.
- Our Quality is certified by numerous Marks and Approvals.



# APPLICATIONS

## FIELDS OF APPLICATIONS

Every day Bremas Ersce works to develop its position as a leader in specific application and industrial areas, through differentiation and design of products for customers. Its purpose is to find solutions to the needs of the market, pursuing technological, commercial and service excellence, that have always distinguished Bremas Ersce as a company of quality "Made in Italy".



SOLAR INDUSTRY



ELEVATORS  
AUTOMATION



POWERTOOLS



WELDING - MARINE  
- COFFEE MACHINES  
- CIRCUIT BREAKERS



ELECTRICAL CABINETS



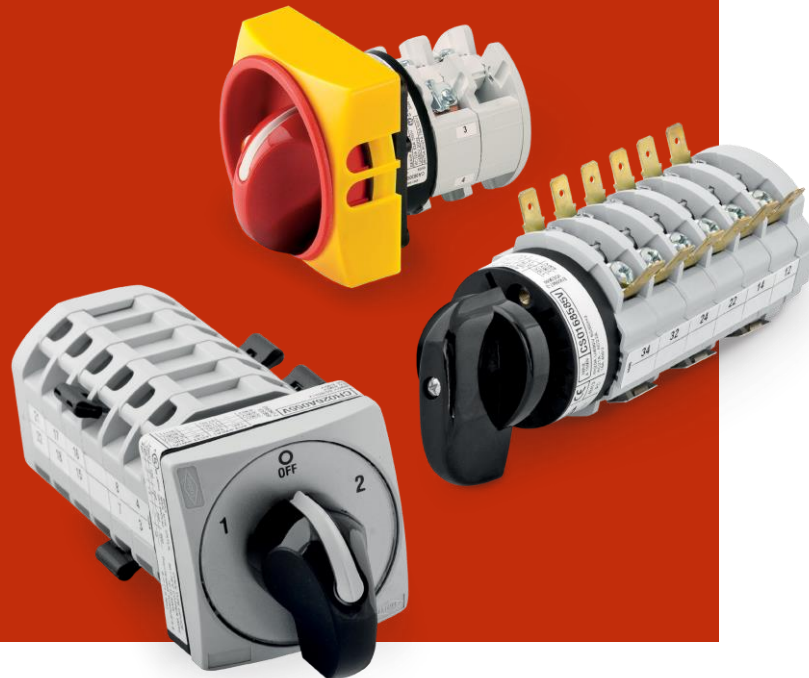
RAIL TRANSPORTS

# PRODUCTS

CERTIFIED **QUALITY** PRODUCTS

3 DIFFERENT SERIES  
FROM 12A TO 630 A

## CAM SWITCHES



CAM SWITCHES  
**CR** Series

CAM SWITCHES  
**CA** Series

CAM SWITCHES  
**CQ** Series

# PRODUCTS

CERTIFIED **QUALITY** PRODUCTS



**SPECIFICALLY DESIGNED  
FOR PV APPLICATIONS**

FROM 1000 Vdc 12A UP TO 1000 Vdc 60 A  
FROM 1500 Vdc 5 A UP TO 1500 Vdc 30 A

**DC DISCONNECT SWITCHES  
FOR PV APPLICATIONS**



**1500 Vdc  
30 A  
in only 45 mm**



COMPANY PROFILE

# PRODUCTS

CERTIFIED **QUALITY** PRODUCTS

A COMPLETE RANGE  
FOR INDUSTRIAL APPLICATIONS  
FROM 20 A TO 630 A

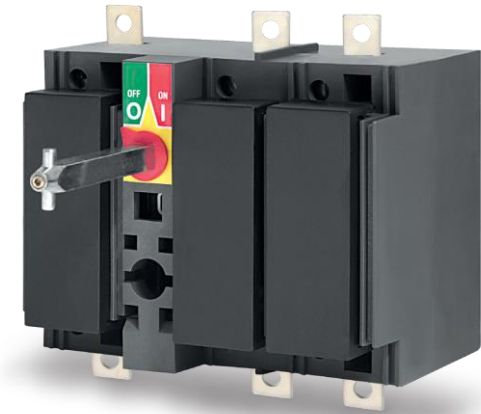
## AC DISCONNECT SWITCHES



DS 20-32  
40 A Series

DS 50-63  
80-100 A  
Series

TS Series



# PRODUCTS

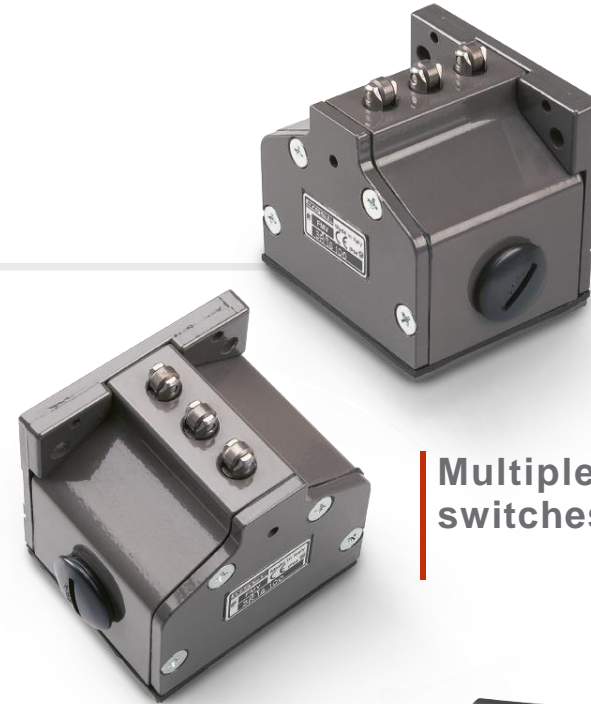
CERTIFIED **QUALITY** PRODUCTS

## Limit switches

**E100 / E200 / E300 / E400** Series



## Safety switches



## Multiple position limit switches **FMV** Series



## Microswitches **M3** Series



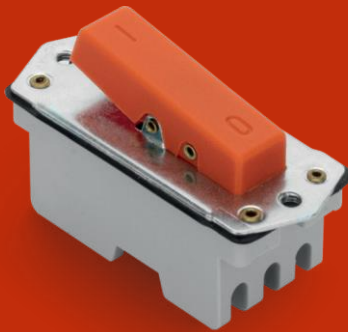
# PRODUCTS

CERTIFIED **QUALITY** PRODUCTS



A COMPLETE RANGE FOR POWER  
AND ELECTROMECHANICAL TOOLS

## POWER TOOL SWITCHES



Products  
are available  
with lever and  
trigger switches,  
in 2 and 3-poles  
versions.

# PRODUCTS

CERTIFIED **QUALITY** PRODUCTS

## RELAY SOCKETS

Sockets for  
industrial relays



Sockets for **OCTAL**  
and **UNDECAL** relays



Socket for  
**PCB** relays





BETTER SWITCHES

**Bremas Ersce SpA**

Via Castellazzo, 9 - 20040 Cambiagio (MI)

Tel. +39.02.95651611 Fax +39.02.95651639 - [info@bremas.it](mailto:info@bremas.it)

ISO 9001 Certified Quality System

[bremas.it](http://bremas.it)